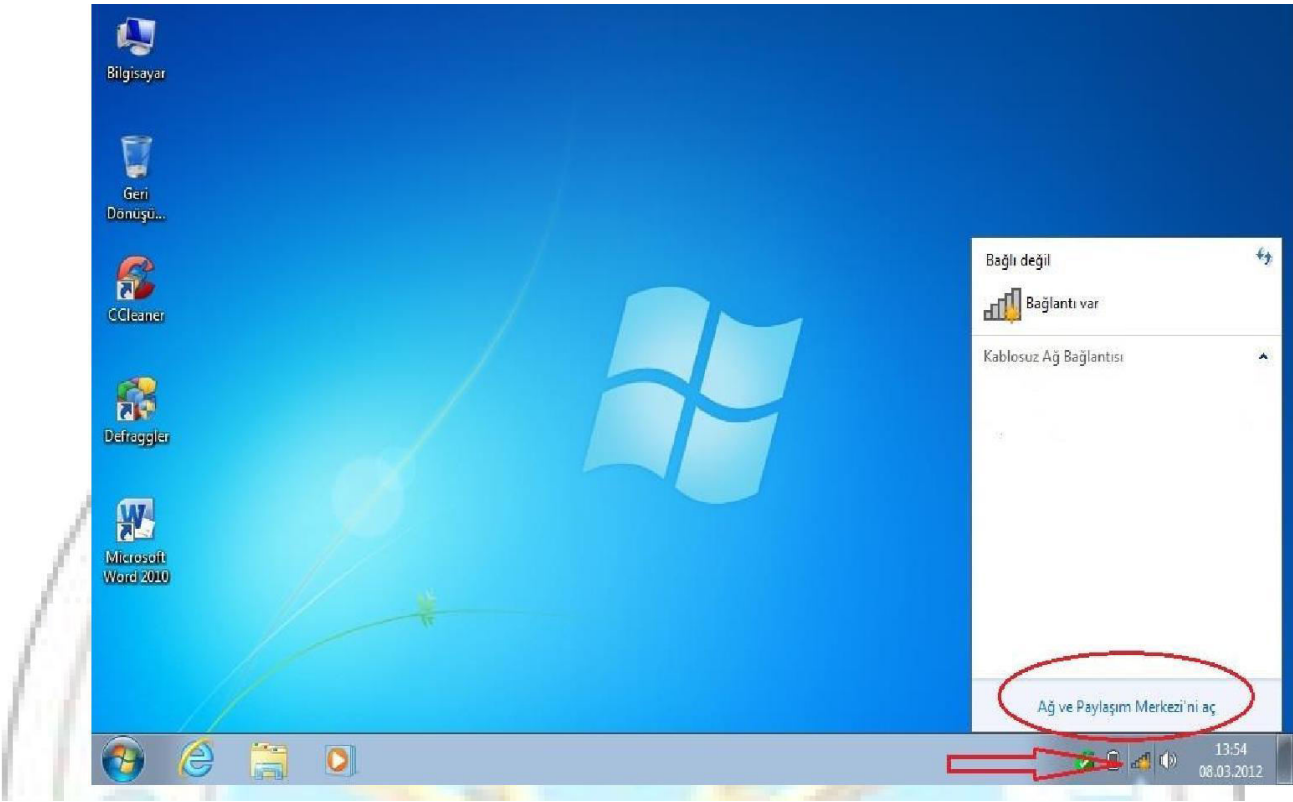


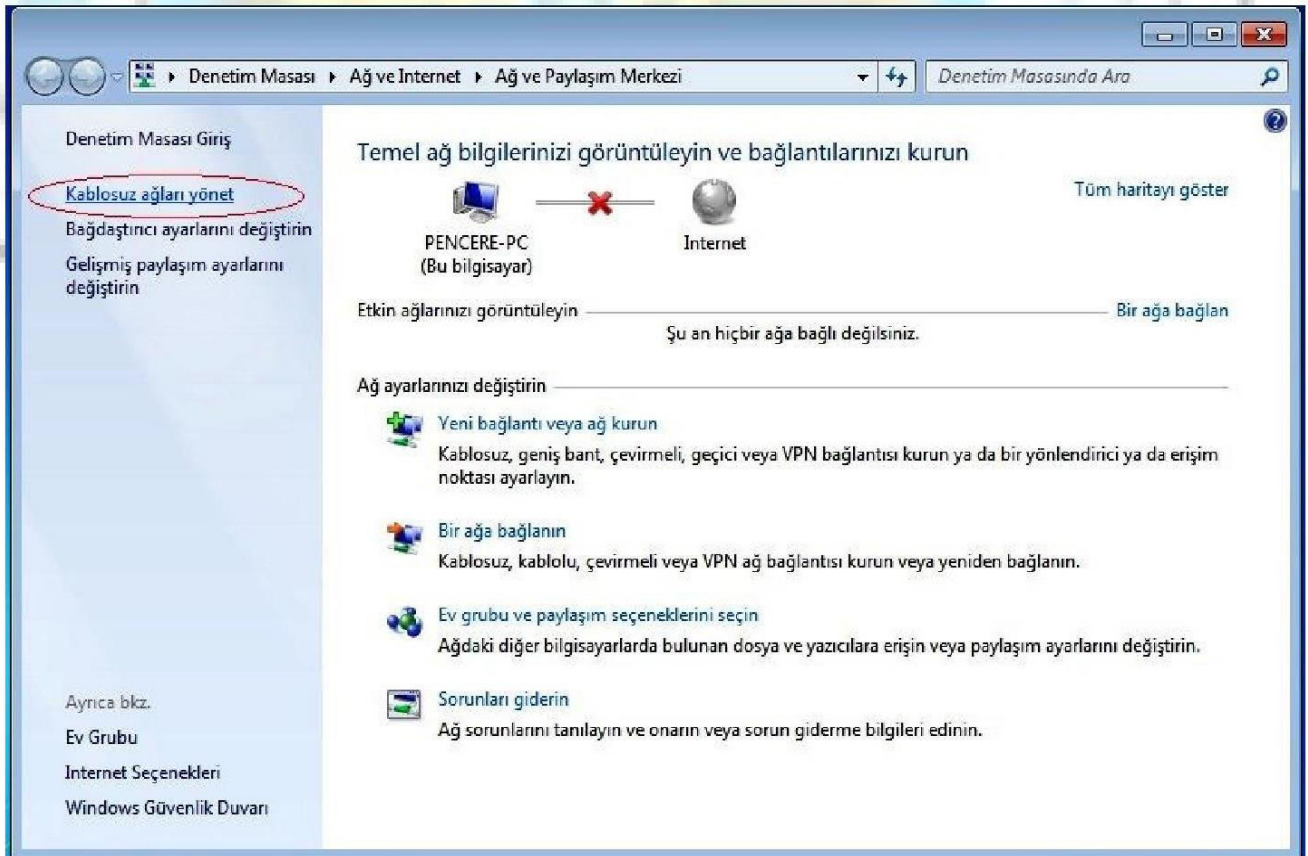
YILDIZ TECHNICAL UNIVERSITY

WI-FI CONNECTION STEPS

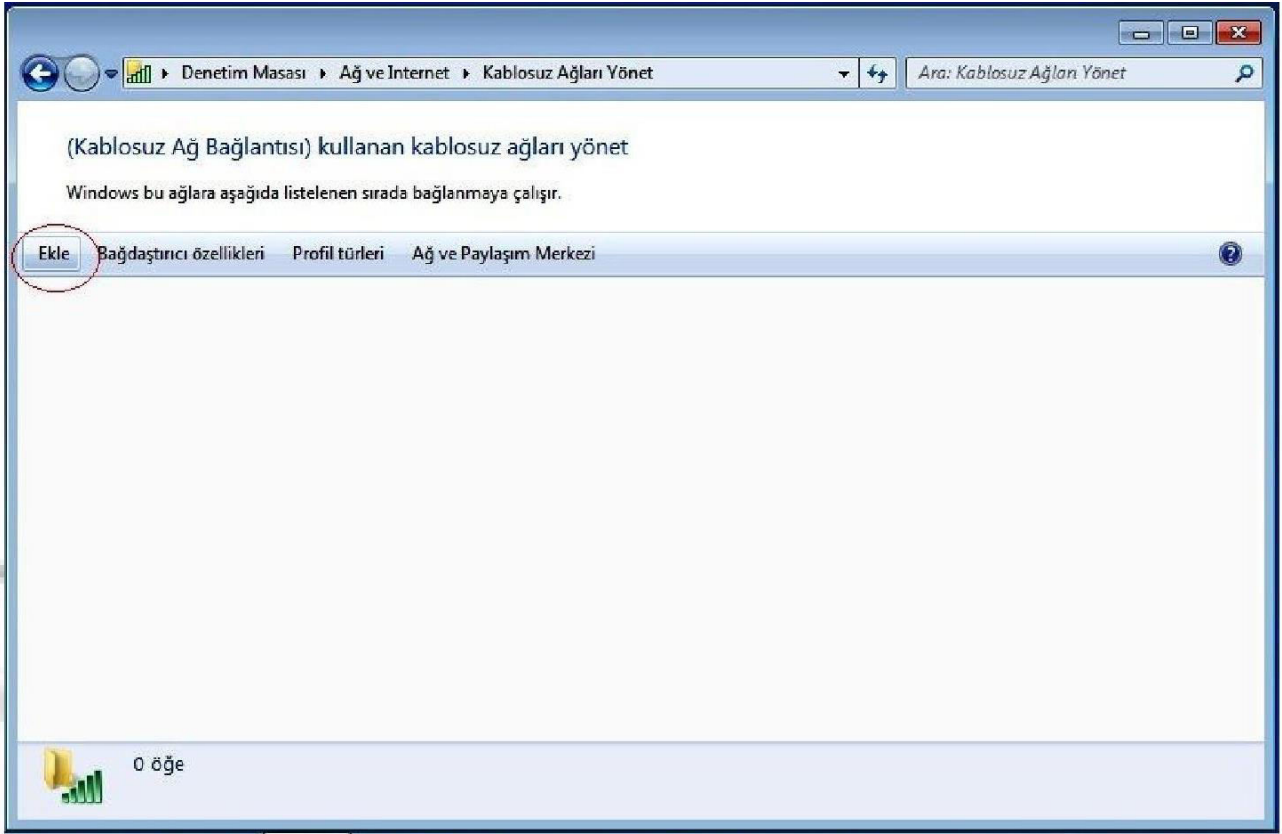
1. Open **Network and Sharing Center** on the right.



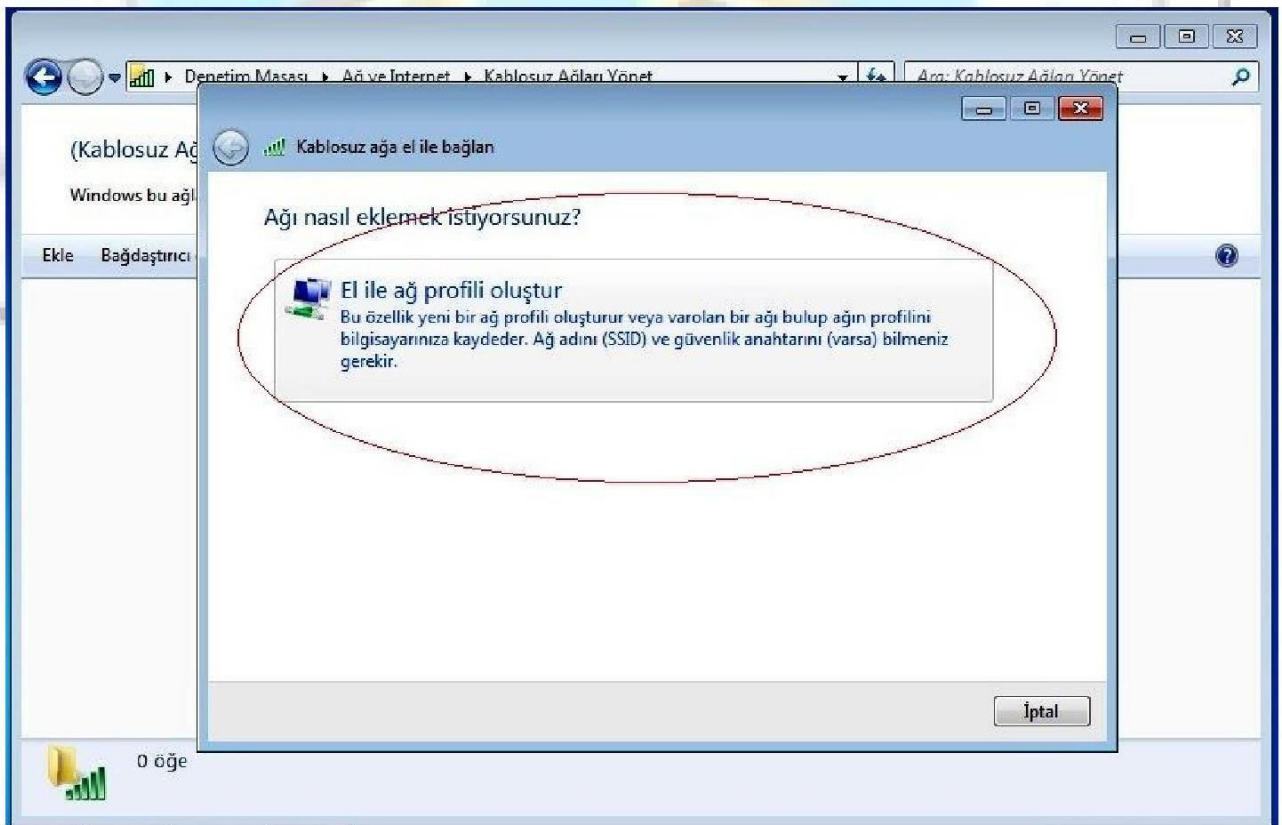
2. Click on the **Manage wireless networks** on the left.



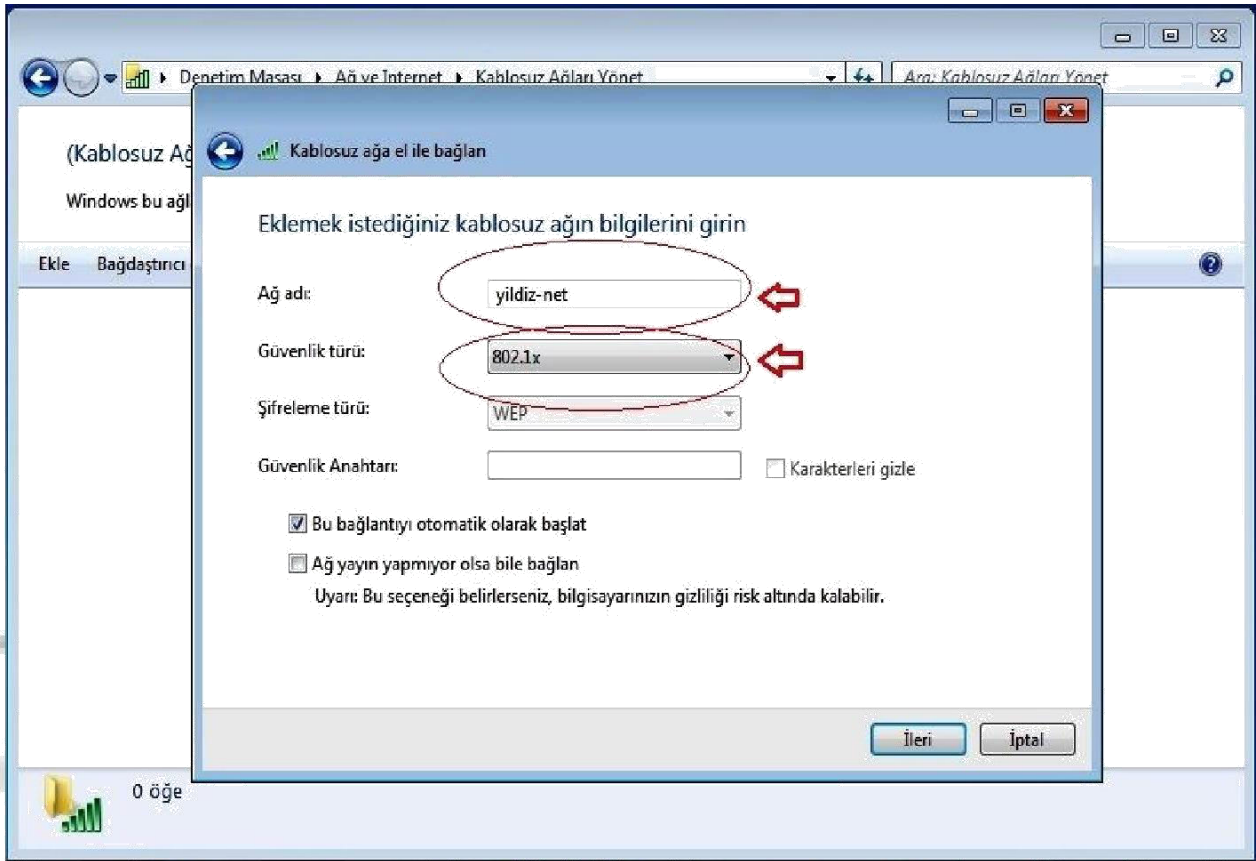
3. Click on the **Add** (Ekle) button on the form.



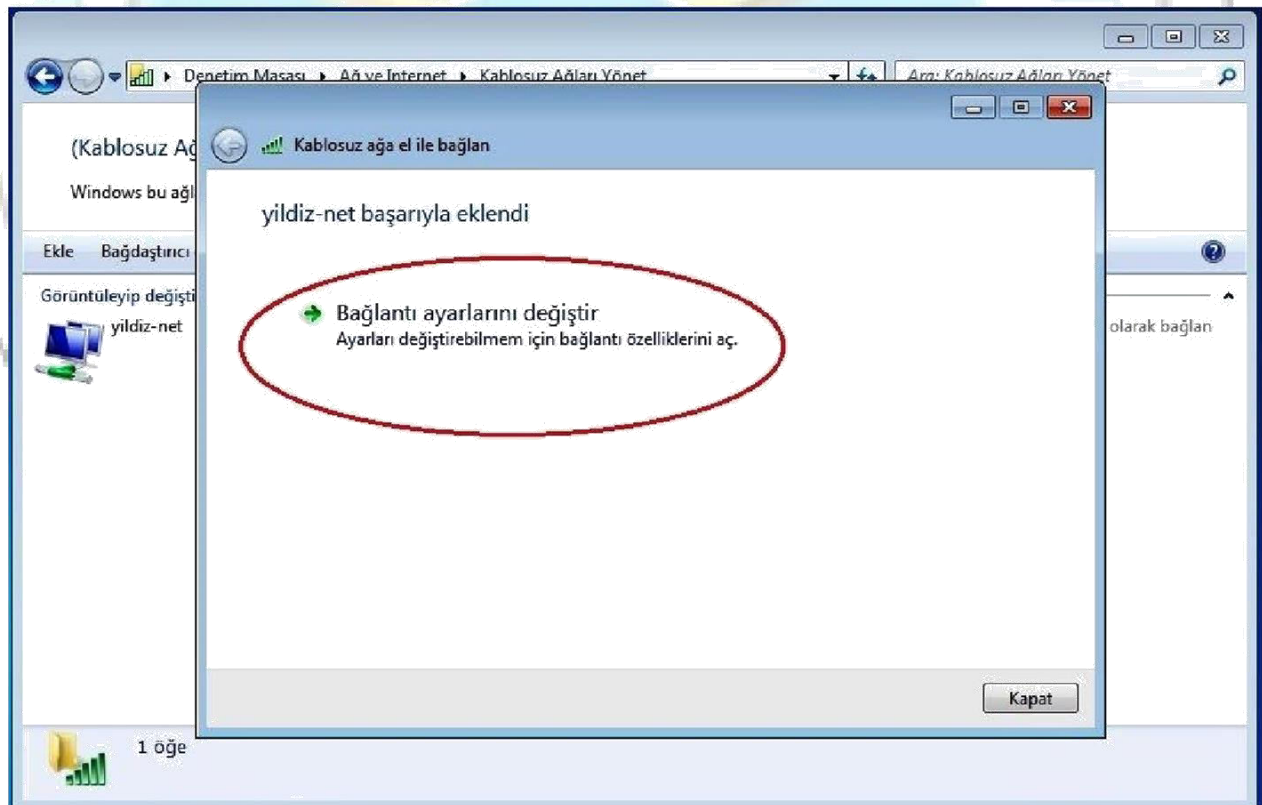
4. Click on the **manually create network profile** link.



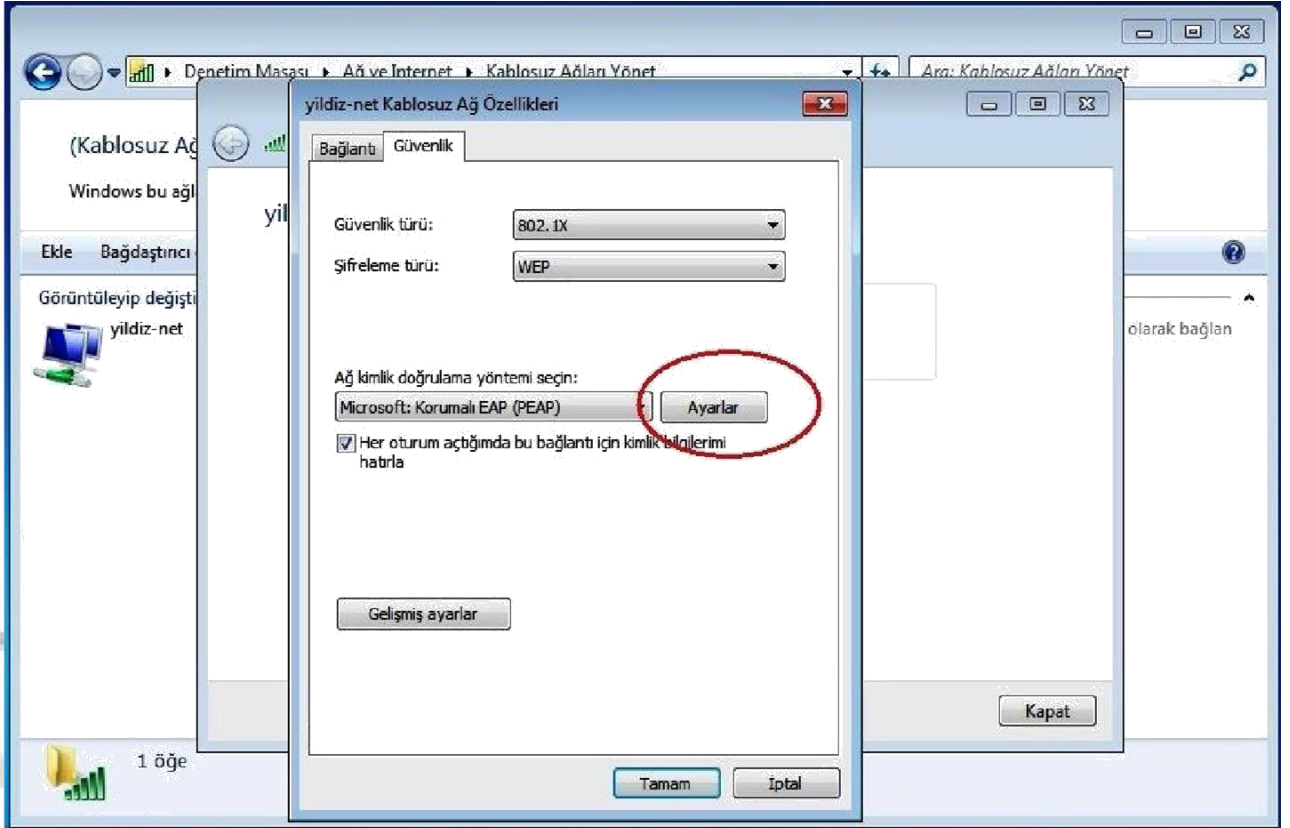
5. Network name: "yildiz-net" Security type: 802.1x, Encryption Type: WEP



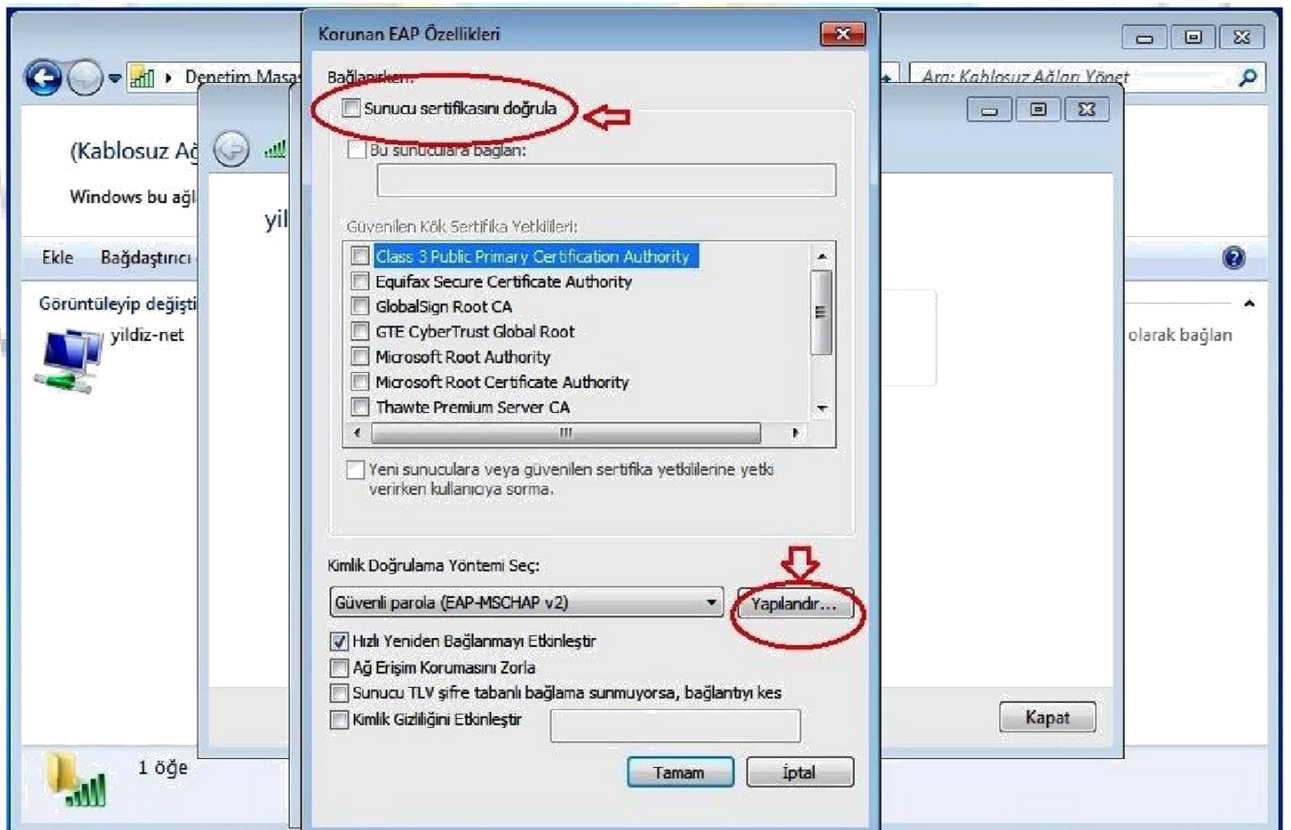
6. Click on the **Change connection settings** link.



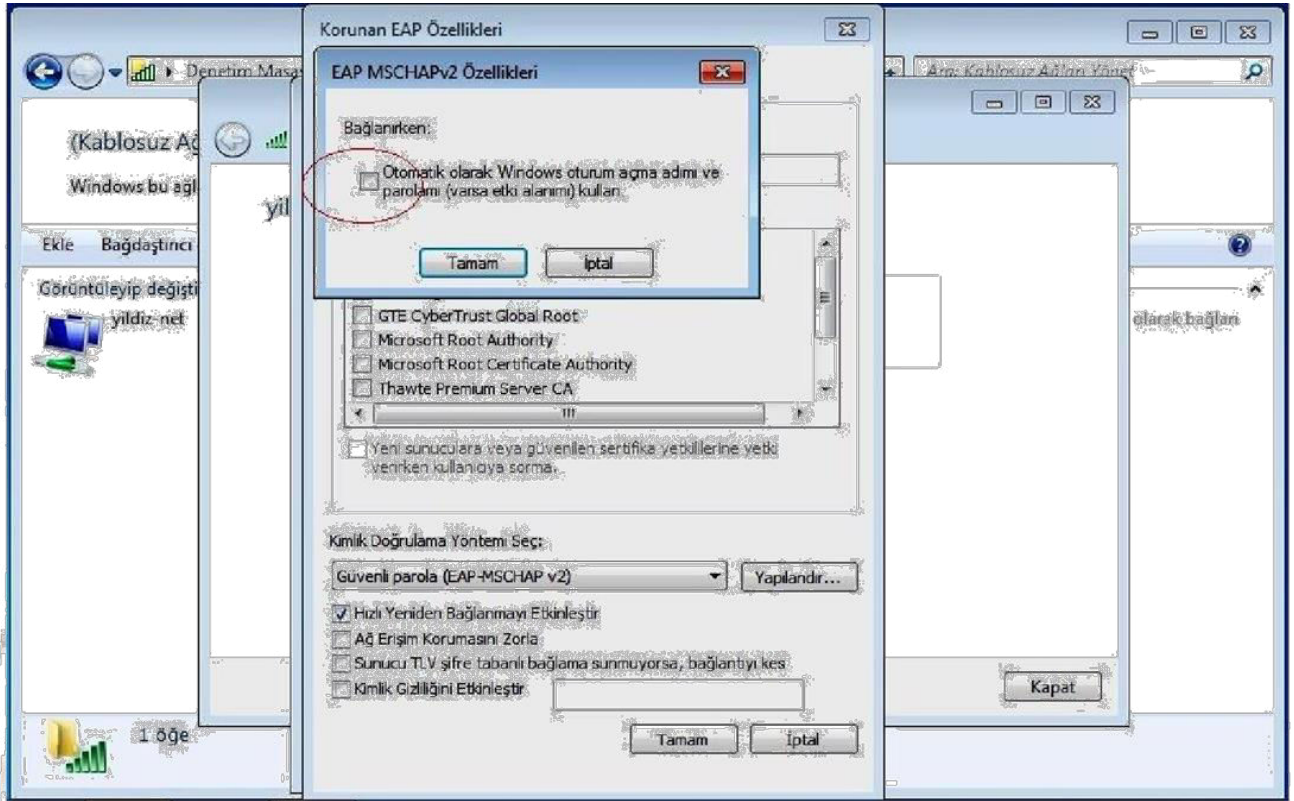
7. Click on the Security tab on the form. **Select Network authentication manager** is to stay as **Microsoft Protected EAP (PEAP)**. Click on the **Settings** button the side.



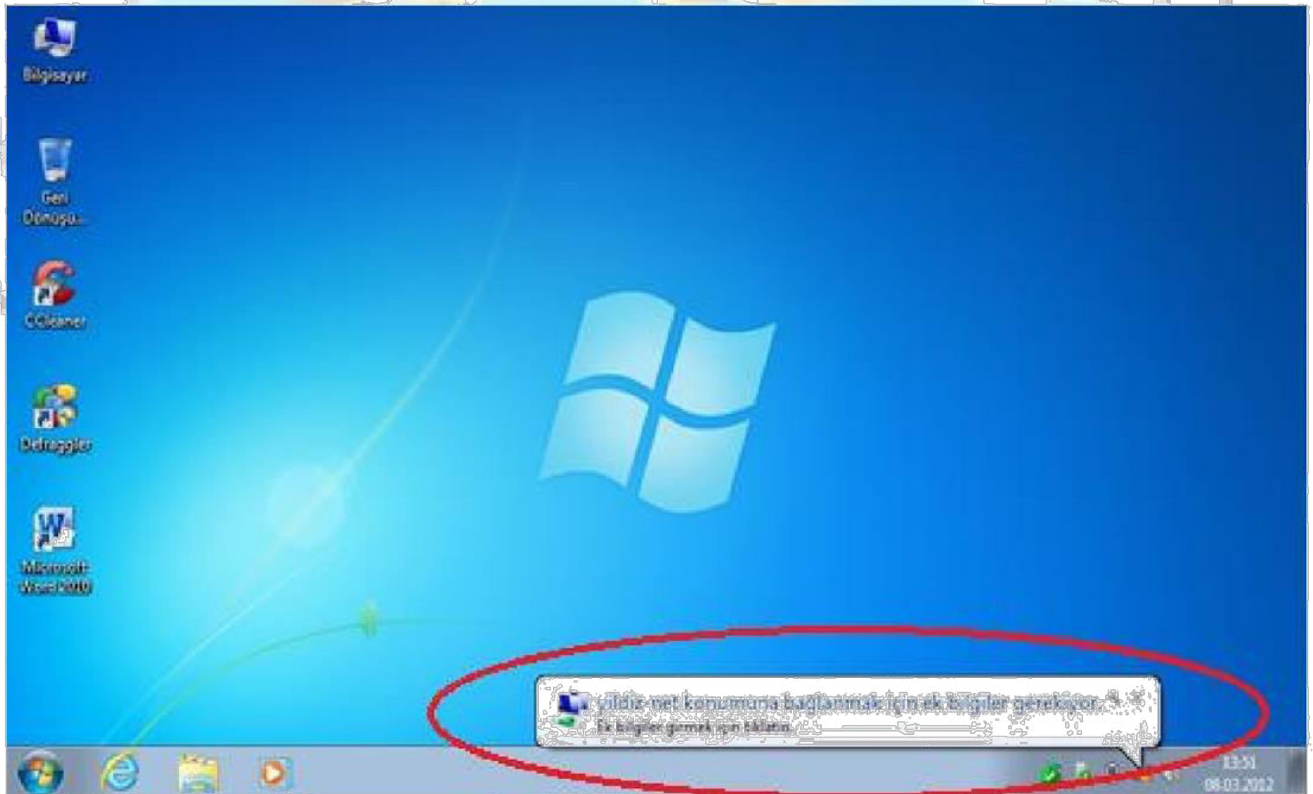
8. Remove the "Verify server certificate" selection. "Select authentication methods" is to remain as "Secure password (EAP-MSCHAP v2)". Click on the "configure" button on the right.



9. Remove the “Use my Windows login name and password automatically” selection on the EAP MSCHAPv2 Properties form. Close all of the tabs clicking on “OK” buttons.



10. Click on the information bubble “additional information needed to connect yıldız-net”.



11. Click on “Additional login information” link. Type the information that you use for **login name** and **password** to logon to GSIS.

